



## Roof Solar PV Mounting System

### Residential roof

Slope metal roof solar mounting system

#### Technical specifications:

Installation site	Slope metal roof	Wind resistance	34m/s	Design standard	AS/NZS 1170, DIN 1055, IBC 2006, GB 50017-2003, etc
Installation angle	Tiled / 0 degree	Snow load	0.8KN/m2	Warranty	10 years warranty and 30 years service life
Panel arrangement	Vertical or horizontal	Panel size	Any		

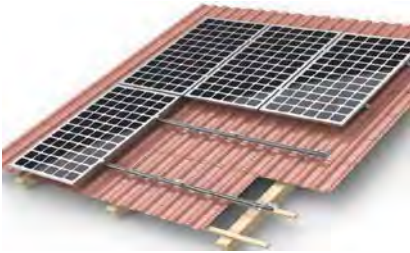


Description for Main Parts			Product Basic Information
No.	Description	Material	
01	L-feet kit	6063-T5	Universal solution for metal roof. Fix L-feet upon the roof, and fix mounting rail by the side of L-feet, and then fix panel by clamps.
02	Mounting Rail kit	6063-T5	
03	End clamp kit	6063-T5	If no allowed to drill, provide section drawing of tin roof will be necessary.
04	Mid clamp kit	6063-T5	

Tile roof solar mounting system

#### Technical specifications:

Installation site	Tile roof	Wind resistance	34m/s	Design standard	AS/NZS 1170, DIN 1055, IBC 2006, GB 50017-2003, etc
Installation angle	Tiled / 0 degree	Snow load	0.8KN/m2	Warranty	10 years warranty and 30 years service life
Panel arrangement	Vertical	Panel size	Any		



Description for Main Parts			Product Basic Information
No.	Description	Material	
01	Roof hook kit	SUS304	Universal solution for tile roof. Fix Roof hook upon roof purline by tapping screws, and fix mounting rail by the side of hook, and then fix panel by clamps.
02	Mounting Rail kit	6063-T5	
03	End clamp kit	6063-T5	
04	Mid clamp kit	6063-T5	

Asphalt shingle roof solar mounting system

#### Technical specifications:

Installation site	Asphalt shingle roof	Wind resistance	34m/s	Design standard	AS/NZS 1170, DIN 1055, IBC 2006, GB 50017-2003, etc
Installation angle	Tiled / 0 degree	Snow load	0.8KN/m2	Warranty	10 years warranty and 30 years service life
Panel arrangement	Vertical or horizontal	Panel size	Any		



Description for Main Parts			Product Basic Information
No.	Description	Material	
01	Flashing kit	6063-T5	Universal solution for asphalt shingle roof. Fix flashing kit upon roof by tapping screws, and fix mounting rail by the side of L-feet, and then fix panel by clamps.
02	Mounting Rail kit	6063-T5	
03	End clamp kit	6063-T5	
04	Mid clamp kit	6063-T5	



Roof hook kit

L-feet kit

Flashing kit