



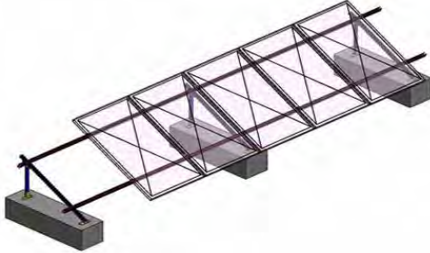
**Commercial roof**

Reinforced concrete flat roof solar mounting system

Roof concrete foundation solar mounting system

**Technical specifications:**

Installation site	Flat roof	Wind resistance	42m/s	Design standard	AS/NZS 1170, DIN 1055, IBC 2006, GB 50017-2003, etc
Installation angle	10-45 degree	Snow load	0.8KN/m2	Warranty	10 years warranty and 30 years service life
Panel arrangement	Vertical	Panel size	Any	Reference price	0.0552 USD/Watt (Based on 1650x992x40, 250W)



Description for Main Parts			Product Basic Information
No.	Description	Material	
01	Triangle bracket kit	Steel Q235b	Universal solution of concrete foundation for flat roof. Fix Triangle bracket kit on the roof by hex bolts group, and fix mounting rail upon main beam, and then fix panel by clamps.
02	Mounting Rail kit	Steel Q235b	
03	End clamp kit	6063-T5	
04	Mid clamp kit	6063-T5	

Ballasted solar mounting system

**Technical specifications:**

Installation site	Flat roof	Wind resistance	42m/s	Design standard	AS/NZS 1170, DIN 1055, IBC 2006, GB 50017-2003, etc
Installation angle	5-30 degree	Snow load	0.8KN/m2	Warranty	10 years warranty and 30 years service life
Panel arrangement	Vertical	Panel size	Any	Reference price	0.0696 USD/Watt (Based on 1650x992x40, 250W)



Description for Main Parts			Product Basic Information
No.	Description	Material	
01	Triangle bracket kit	Steel Q235b	Universal solution of ballasted type for flat roof. Fix Triangle bracket kit on the roof with ballasted foundation, and fix mounting rail upon main beam, and then fix panel by clamps.
02	Mounting Rail kit	Steel Q235b	
03	End clamp kit	6063-T5	
04	Mid clamp kit	6063-T5	

Ballasted solar mounting system (Double Domes)

**Technical specifications:**

Installation site	Flat roof (East & West)	Wind resistance	42m/s	Design standard	AS/NZS 1170, DIN 1055, IBC 2006, GB 50017-2003, etc
Installation angle	15 degree	Snow load	0.8KN/m2	Warranty	10 years warranty and 30 years service life
Panel arrangement	Horizontal	Panel size	Any	Reference price	0.0696 USD/Watt (Based on 1650x992x40, 250W)



Description for Main Parts			Product Basic Information
No.	Description	Material	
01	Triangle bracket kit	Steel Q235b	Universal solution of ballasted type for flat roof. Fix Triangle bracket kit on the roof with ballasted pan, and fix mounting rail upon main beam, and then fix panel by clamps.
02	Mounting Rail kit	Steel Q235b	
03	End clamp kit	6063-T5	
04	Mid clamp kit	6063-T5	

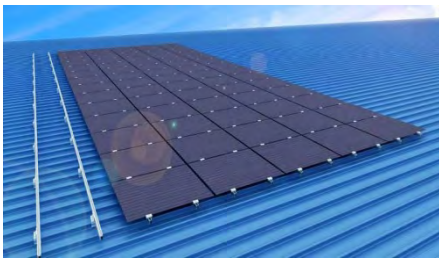


Metal roof solar mounting system

Tiled type solar mounting system

**Technical specifications**

Installation site	Metal roof	Wind resistance	34m/s	Design standard	AS/NZS 1170, DIN 1055, IBC 2006, GB 50017-2003, etc
Installation angle	0 degree	Snow load	0.8KN/m2	Warranty	10 years warranty and 30 years service life
Panel arrangement	Vertical or horizontal	Panel size	Any	Reference price	0.0336 USD/Watt (Based on 1650x992x40, 250W)



Description for Main Parts			Product Basic Information
No.	Description	Material	Universal solution for metal roof. Fix L-feet on roof by tapping screws, and fix mounting rail upon mounting rail, and then fix panel by clamps. Notice: Here, mounting rail can be changed to Q235b U-channel steel, if load Capacity of roof has no problem
01	L-feet kit	6063-T5	
02	Mounting Rail kit	6063-T5 or Q235b	
03	End clamp kit	6063-T5	
04	Mid clamp kit	6063-T5	



Triangle type solar mounting system

**Technical specifications**

Installation site	Metal roof	Wind resistance	42m/s	Design standard	AS/NZS 1170, DIN 1055, IBC 2006, GB 50017-2003, etc
Installation angle	0-30 degree	Snow load	0.8KN/m2	Warranty	10 years warranty and 30 years service life
Panel arrangement	Vertical or horizontal	Panel size	Any	Reference price	0.0624 USD/Watt (Based on 1650x992x40, 250W)



Description for Main Parts			Product Basic Information
No.	Description	Material	Universal solution for metal roof. Fix Triangle bracket kit upon the roof by tapping screws, and fix mounting rail upon main beam, and then fix panel by clamps.
01	Triangle bracket kit	6063-T5	
02	Mounting Rail kit	6063-T5	
03	End clamp kit	6063-T5	
04	Mid clamp kit	6063-T5	