



Ground Solar PV Mounting System

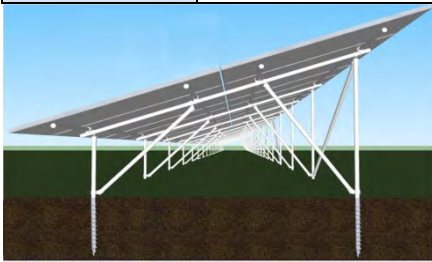
C-channel steel ground solar mounting system

Pile solar mounting system

Ground screw solar mounting system

Technical specifications

Installation site	Ground	Wind resistance	42m/s	Design standard	AS/NZS 1170, DIN 1055, IBC 2006, GB 50017-2003, etc
Installation angle	10-30 degree	Snow load	0.8KN/m2	Warranty	10 years warranty and 30 years service life
Panel arrangement	Vertical	Panel size	Any		

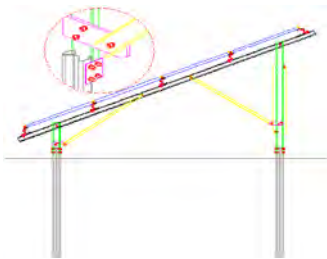


Description for Main Parts			Product Basic Information
No.	Description	Material	
01	Triangle bracket kit	C-channel Q235b	Universal ground screw type solution. Here, Triangle bracket kit: Front Post, Rear Post, Main Beam and diagonal brace. Fix Triangle bracket kit upon ground screw by hex bolts, and fix mounting rail upon main beam, and then fix panel by clamps.
02	Mounting rail kit	C-channel Q235b	
03	Clamp kit	Al 6063-T5	
04	Ground screw kit	Φ76*3 pipe	

Σ-steel pile solar mounting system

Technical specifications

Installation site	Ground	Wind resistance	42m/s	Design standard	AS/NZS 1170, DIN 1055, IBC 2006, GB 50017-2003, etc
Installation angle	0-30 degree	Snow load	0.8KN/m2	Warranty	10 years warranty and 30 years service life
Panel arrangement	horizontal	Panel size	Any		



Description for Main Parts			Product Basic Information
No.	Description	Material	
01	Triangle bracket kit	C-channel Q235b	Universal Σ-steel pile type solution. Here, Triangle bracket kit: Front Post, Rear Post, Main Beam and diagonal brace. Fix Triangle bracket kit upon Σ-pile by hex bolts, and fix mounting rail upon main beam, and then fix panel by clamps.
02	Mounting rail kit	C-channel Q235b	
03	Clamp kit	Al 6063-T5	
04	Σ-steel pile kit	H-steel Q235b	





Cement mixed pile solar mounting system

Technical specifications

Installation site	Ground	Wind resistance	56m/s	Design standard	AS/NZS 1170, DIN 1055, IBC 2006, GB 50017-2003, etc
Installation angle	0-30 degree	Snow load	0.8KN/m2	Warranty	10 years warranty and 30 years service life
Panel arrangement	Vertical or horizontal	Panel size	Any	Reference price	0.1152 USD/Watt (Based on 1650x992x40, 250W)
		Description for Main Parts			Product Basic Information
		No.	Description	Material	Universal cement mixed pile type solution. Here, Triangle bracket kit: Front Post, Rear Post, Main Beam and diagonal brace. Fix Triangle bracket kit upon pile by hex blots, and fix mounting rail upon main beam, and then fix panel by clamps.
		01	Triangle bracket kit	C-channel Q235b	
		02	Mounting rail kit	C-channel Q235b	
		03	Clamp kit	6063-T5	
04	Pile kit	Pipe Q235b			

Concrete foundation solar mounting system

Single column solar mounting system

Technical specifications

Installation site	Ground	Wind resistance	34m/s	Design standard	AS/NZS 1170, DIN 1055, IBC 2006, GB 50017-2003, etc
Installation angle	0-30 degree	Snow load	0.8KN/m2	Warranty	10 years warranty and 30 years service life
Panel arrangement	Vertical or horizontal	Panel size	Any	Reference price	0.264 USD/Watt (Based on 1650x992x40, 250W)
		Description for Main Parts			Product Basic Information
		No.	Description	Material	Universal single column type solution. Fix post into earth or upon concrete foundation, and fix main beam upon the column. Fix secondary beam upon main beam, fix mounting rail upon secondary beam, and then fix panel by clamps.
		01	Main beam kit	C-channel Q235b	
		02	Mounting rail kit	C-channel Q235b	
		03	Clamp kit	6063-T5	
04	Column kit	Pile Q235b			

Matrix-type solar mounting system

Technical specifications

Installation site	Ground	Wind resistance	56m/s	Design standard	AS/NZS 1170, DIN 1055, IBC 2006, GB 50017-2003, etc
Installation angle	0-30 degree	Snow load	1.4KN/m2	Warranty	10 years warranty and 30 years service life
Panel arrangement	Vertical	Panel size	Any	Reference price	0.0636 USD/Watt (Based on 1650x992x40, 250W)
		Description for Main Parts			Product Basic Information
		No.	Description	Material	Universal Matrix-type solution. Here, Triangle bracket kit: Front Post, Rear Post, Main Beam and diagonal brace. Fix Triangle bracket kit upon concrete foundation, and fix mounting rail upon main beam, and then fix panels by clamps.
		01	Triangle bracket kit	C-channel Q235b	
		02	Mounting rail kit	C-channel Q235b	
		03	Mid clamp kit	6063-T5	
04	End clamp kit	6063-T5			

